

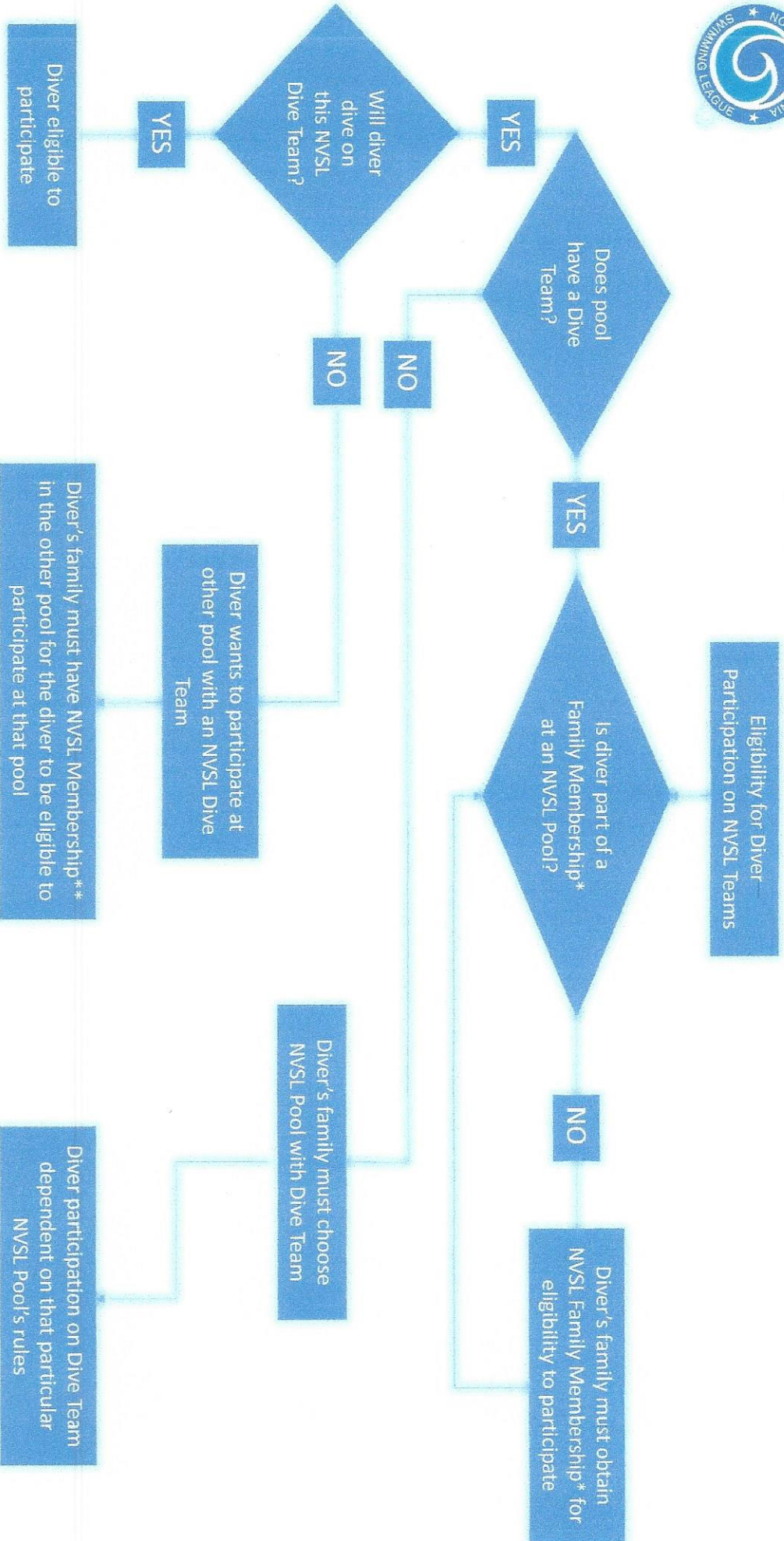
## Eligibility Requirements for Divers Participating on NVSL Teams

1. The attached flow chart and notes are intended to help guide families, team reps, coaches, division coordinators, officials, and the NVSL Dive leadership on the eligibility requirements for diver participation on NVSL teams. These eligibility requirements are contained in the NVSL By-laws, specifically Articles III and IV which were changed on January 31, 2016. The flow chart has been constructed to be consistent with the recently changed By-laws.
2. The simple way to approach eligibility is that all divers must be covered on a *bona fide* family\* membership in the NVSL pool for which they dive, except for one situation. The one exception is when a diver, who is covered on a family membership in an NVSL pool that does not have a dive team, wants to participate in NVSL diving. The diver's family, in this situation, may select any NVSL pool with a dive team and inquire about its diver participating on the dive team. Eligibility will depend on the rules established by specific pools to determine dive team participation.
3. Another By-law change that requires explanation concerns individual memberships. Divers are not eligible to participate in NVSL diving under memberships issued only to divers. This situation can occur when divers want to coach diving and participate at NVSL pools, other than at the home dive pool in which their families have memberships. These pools will sometimes offer memberships to coaches embedded in their contracts. The NVSL considers these memberships to be individual memberships.
4. Questions and issues about the application of the eligibility requirements in Articles III and IV in the By-laws shall be referred to the Rules Committee Chair for NVSL Diving for resolution by contacting Mike Schaeffer at [mikejudy@cox.net](mailto:mikejudy@cox.net) or 703-593-5075.

\*Definition of *family* is found in the Glossary of the NVSL Handbook.



# FLOW CHART FOR DETERMINING ELIGIBILITY TO PARTICIPATE ON NVSL DIVE TEAMS



(SEE NEXT PAGE FOR NOTES REFERENCED BY \* and \*\* ON FLOW CHART)

## Notes

\*Family Membership per definition of Article III of the By-Laws and the NVSL Handbook Glossary. Article III restated Paragraph 2.a of the Swim Rules of the current season's NVSL Handbook.

\*\*Membership must be a Family Membership; individual memberships for diver participation are not permitted per Article IV of the By-Laws, also restated in the current season's NVSL Handbook. Example: a membership embedded in a coach's employment contract is considered an individual membership. A coach is not eligible to dive for that team under an individual membership.